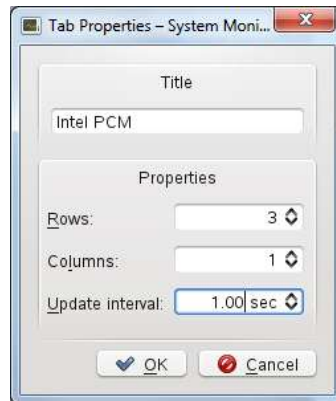


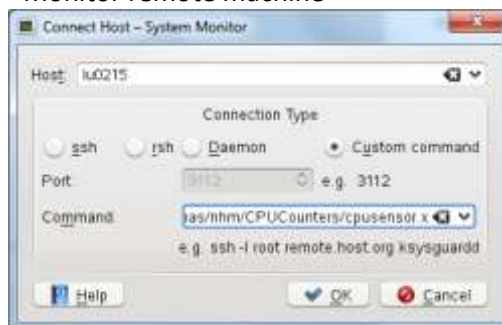
Intel® Performance Counter Monitor with KSysGuard.

This is a short description how you can display Intel® Performance Counter Monitor in the KDE.

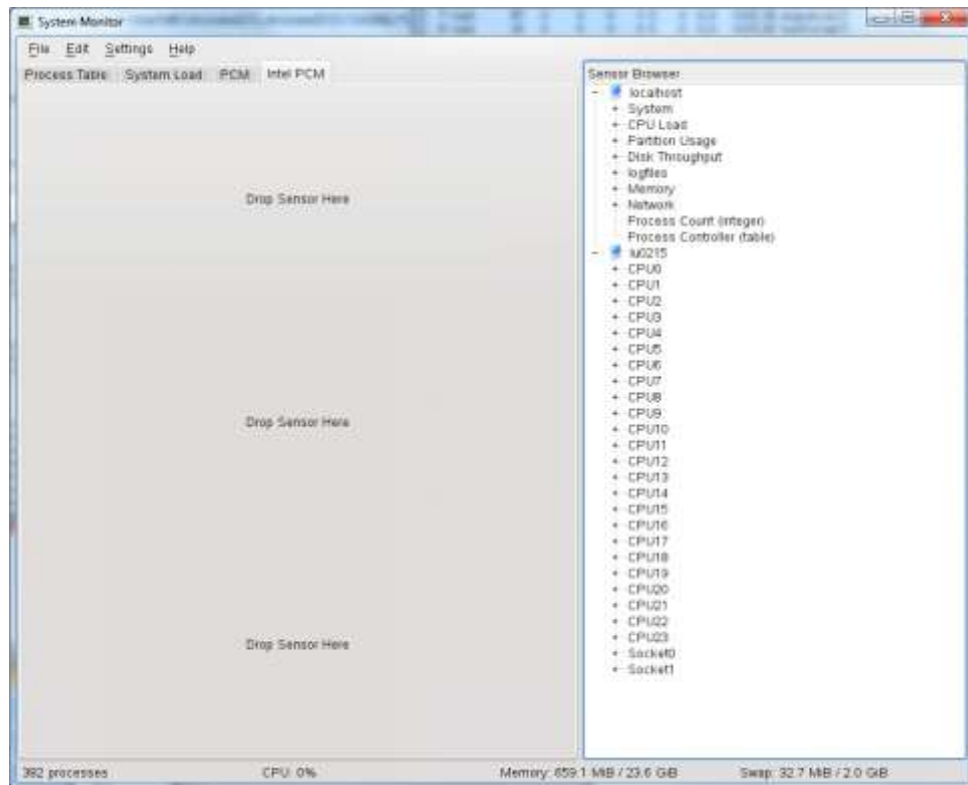
1. Start KSysGuard. (KDE 4 is used in this description.)
2. Create a new tab: „File->New Tab“



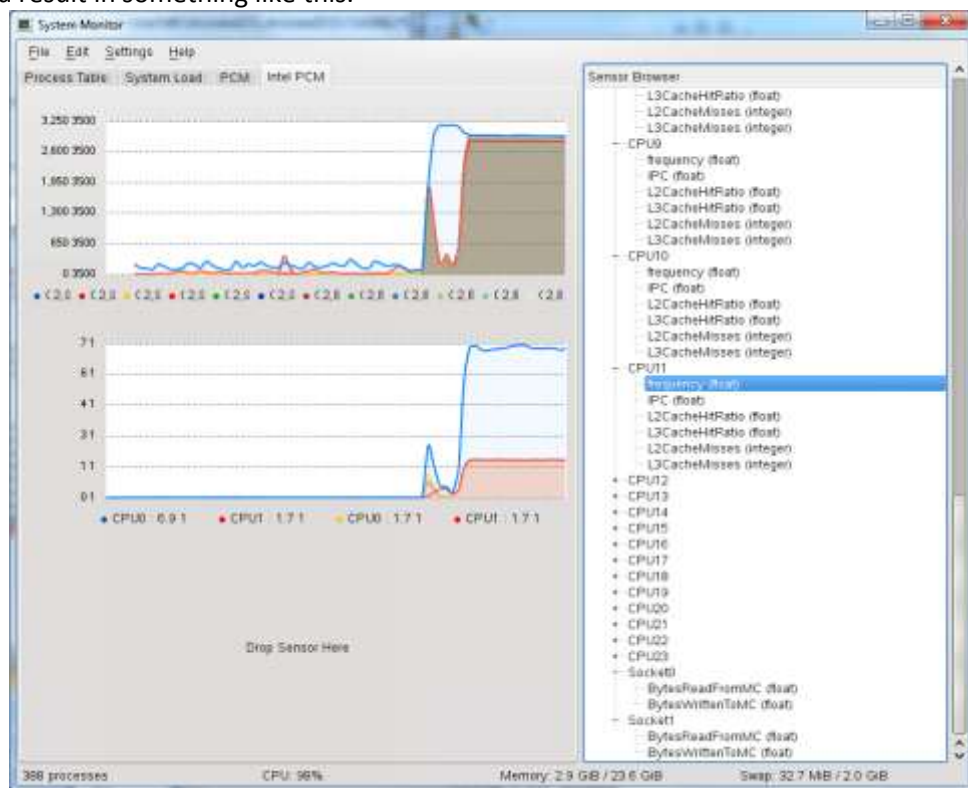
3. Access sensors: “File->Monitor remote machine”



Add the name of your (local) machine. Select “custom command” and enter pcm-sensor.x including the correct path. Your screen should now look like this:



Drag&n&drop sensors from the right pane to the chart area. Select “line graph” as type. This should result in something like this:



The upper graph shows all the frequencies for CPUs 0 to 11. The middle chart shows memory written and read for socket 0 and 1.